



ABOUT BETATRONIX

Betatronix Inc. is the leader in design, development and manufacture of rugged precision solutions for position sensing and input controls. Serving the Space, Military, Aerospace, and Industrial markets for 50 years, we offer a wide range of standard and custom products to meet the most rigorous application requirements. We bring engineering expertise and innovation together to solve our customer's challenges with cost effective quality solutions while providing unmatched service and support.

MARKETS & APPLICATIONS

Space • Military • Defense • Aerospace • Heavy Equipment/Agriculture • Medical • Transportation

SUPERIOR ENGINEERING PRODUCES TOP PRODUCTS

The Betatronix Team provides strong leadership and engineering technical expertise to create solutions that solve problems where others have failed before us. We will meet or exceed the most demanding customer quality and reliability standards.

With products that will endure extreme technical and environmental requirements, we are deployed in applications such as space exploration, satellite communications, guidance/ navigation, telemetry, actuation, audio/lighting, oil/gas, panel instrumentation, railway systems, and hydraulic feedback control.

WE DISCOVER SOLUTIONS

Through multi-discipline design focus, we develop optimized solutions for improved accuracy, unique packaging, reduced unit size, extended life and other special requirements. The results – increased reliability, better functionality, improved performance, and increased savings.

REGISTRATIONS

CCR: 25413

NAICS: 334415, 334419, 334413, 334511

SIC No.: 3676, 3761, 3764, 3769, 3812, 38239908, 3825, 3829, 3841

Schedule B/Commodity # 853340 (Plastic)

Schedule B/Commodity # 853331 (Wire wound)

FSC: 1680, 5905, 6210, 6615, 6625, 6695

ECCN/CCL (EAR): 3A001.F, 2B206.C, 2B006.A

CERTIFICATIONS

AS9100 – Reg. No. 10008269ASH09

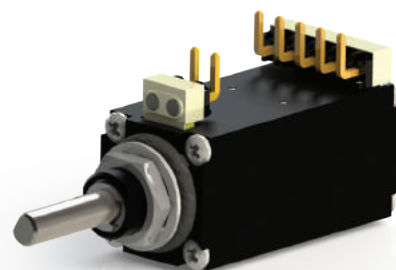
ISO 9001 – Reg. No. 10008269QM08

TRUE INNOVATIONS

Betatronix products are constructed with molded conductive plastic and cermet elements fabricated as rotary, linear, element/wiper assemblies, and arc segment. Except for the multi-turn potentiometers, all of these products are also available with wire wound resistance elements.

Betatronix military products are designed and tested to military specifications. Our operators and inspectors are certified to NASA standards. (MIL-PRF-39023, MIL-PRF-12934, NASA-STD-8739.3 and J-STD-001D)

Since our customers require pinpoint accuracy with custom packaging, combined with operation in harsh environments and extended life, we are always committed to ongoing product improvement to meet these exacting needs. Quality and performance are our highest priorities and are backed by a two-year warranty.



BETATRONIX PRODUCT LINE

Arc Segment Potentiometers

- Constructed with fewer components reducing weight and cost.
- Custom angles available in either open or closed design.
- Can survive 500 G's shock.

Concentric Shaft Potentiometers

- Available in various housing diameters
- Single and multi-turn combinations
- Multiple functional performances – two independent shafts control different potentiometer sections.
- Hollow-shaft configurations
- Operational life exceeds five million cycles.

Element/Wiper Assembly

- Custom shaft mating wiper assemblies available in linear motion, arc and rotary configurations.
- Customer specific mounting available.

Gear Potentiometer Assemblies

- Supplied with standard or anti-backlash gears for reduced costs, improved reliability, and better overall performance.
- Customer specified gear interfaces available.

Linear Motion Potentiometers

- Wire wound, molded conductive plastic, and cermet elements.
- Various stroke lengths available up to 14".
- Custom designed units with specific features, fixtures, cabling, or materials.



Miniaturized Potentiometers

- Single and multi-turn combinations.
- Multiple mounting configurations.
- Concentric shaft design.
- Wire leads, terminals, and circuit board connector styles.
- Operational life exceeds five million cycles.

Motor Potentiometers

- Complete motor pot assemblies.
- Single or multi-turn combinations.
- AC/DC motors in various configurations.
- Operational life exceeds five million cycles.

Multi-turn Potentiometers

- Available with 10 turns of motion.
- Molded conductive plastic for improved life characteristics. Not available as wire-wound.
- Custom gear ratios available to meet angular design requirements.
- Operational life exceeds five million cycles.

Switch Modules

- Single or multi-pole/position with positive detent "on-off" rotary switches.
- Concentric shaft, push-pull configurations.
- Operational life exceeds ten million cycles.



125 Comac Street, Ronkonkoma, New York 11779

+1 (631) 582-6740 Phone

info@betatronix.com Email

Visit us on the web at www.betatronix.com

